



# Certificate of Analysis

Powered by Confident Cannabis

## Open Book Extracts

Roxboro, NC 27573  
 taylor@openbookextracts.com  
 (727) 512-8686  
 Lic. #

Sample: 2001DBL0403.1410

METRC Sample:  
 Lot #: 200125-T10L-1

Strain: Lemon Drop  
 Ordered: 01/27/2020; Sampled: 01/29/2020; Completed: 02/03/2020

## Lemon Drop Tincture 1000mg

Ingestible, Tincture, Alcohol



Pesticides



Microbials



Mycotoxins



Heavy Metals



Foreign Matter



Solvents

### Terpenes

Analyzed by 300.13 GC/FID and GC/MS



0.815 mg/g  
 Total Terpenes

Compound	LOQ mg/g	Mass mg/g	Mass %	Relative Concentration
δ-Limonene	0.069	0.619	0.0619	
β-Pinene	0.069	0.108	0.0108	
γ-Terpinene	0.069	0.088	0.0088	
α-Bisabolol	0.069	<LOQ	<LOQ	
α-Humulene	0.069	<LOQ	<LOQ	
α-Pinene	0.069	<LOQ	<LOQ	
α-Terpinene	0.069	<LOQ	<LOQ	
β-Caryophyllene	0.069	<LOQ	<LOQ	
β-Myrcene	0.069	<LOQ	<LOQ	
Camphene	0.069	<LOQ	<LOQ	
Caryophyllene Oxide	0.069	<LOQ	<LOQ	
cis-Nerolidol	0.045	<LOQ	<LOQ	
cis-Ocimene	0.045	<LOQ	<LOQ	
δ-3-Carene	0.069	<LOQ	<LOQ	
Eucalyptol	0.069	<LOQ	<LOQ	
Guaiol	0.069	<LOQ	<LOQ	
Isopulegol	0.069	<LOQ	<LOQ	
Linalool	0.069	<LOQ	<LOQ	
p-Cymene	0.069	<LOQ	<LOQ	
Terpinolene	0.069	<LOQ	<LOQ	
trans-Nerolidol	0.024	<LOQ	<LOQ	
trans-Ocimene	0.024	<LOQ	<LOQ	

### Cannabinoid Relative Concentration

Analyzed by 300.18 UHPLC/PDA

Pass

0.111 mg/g  
 Δ9-THC + Δ8-THC

33.736 mg/g  
 CBD

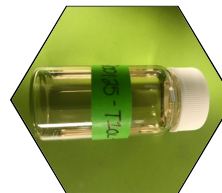
pH: NT  
 Aw: 0.31

34.535 mg/g  
 Total Cannabinoids

Not Tested  
 Homogeneity

Compound	LOQ mg/g	Mass mg/g	Mass %	Relative Concentration
CBC	0.058	<LOQ	<LOQ	
CBCa	0.058	<LOQ	<LOQ	
CBD	0.058	33.736	3.3736	
CBDa	0.058	<LOQ	<LOQ	
CBDV	0.058	0.371	0.0371	
CBDVa	0.058	<LOQ	<LOQ	
CBG	0.058	0.317	0.0317	
CBGa	0.058	<LOQ	<LOQ	
CBL	0.058	<LOQ	<LOQ	
CBN	0.058	<LOQ	<LOQ	
Δ8-THC	0.058	<LOQ	<LOQ	
Δ9-THC	0.058	0.111	0.0111	
THCa	0.058	<LOQ	<LOQ	
THCV	0.058	<LOQ	<LOQ	
THCVa	0.058	<LOQ	<LOQ	

Total THC = 0.877 x THC-A + Δ9-THC + Δ8-THC; Total CBD = CBDa \* 0.877 + CBD



*Stacy Gardalen*

Stacy Gardalen  
 Quality Control

*Glen Marquez*

Glen Marquez  
 Quality Control



4439 Polaris Ave  
 Las Vegas, NV

(702) 728-5180

www.dblabslv.com

This report is considered highly confidential and the sole property of the customer. DB Labs will not discuss any part of this study with personnel other than those authorized by the client. The results described in this report only apply to the samples analyzed. The reported result is based on a sample weight with the applicable moisture content for that sample. LOQ = Limit of Quantitation. Pesticide LOQ = Instrument Limit of Quantitation. NA = Not Analyzed. ND = Not Detected. NR = Not Reported. NT = Not Tested. PGR = Plant Growth Regulator. Unless otherwise stated all quality control samples performed within specifications established by the Laboratory. This product has been tested by DB Labs, LLC (MME# 61887736101164525768) using valid testing methodologies and a quality system as required by Nevada state law. Edibles are picked up prior to final packaging unless otherwise stated. Values reported relate only to the product tested. The uncertainty of measurement associated with the measurement result reported in this certificate is available from the organization upon request. DB Labs makes no claims as to the efficacy, safety or other risks associated with any detected or non-detected levels of any compounds reported herein. This Certificate shall not be reproduced except in full, without the written approval of DB Labs.



# Certificate of Analysis

Powered by Confident Cannabis

## Open Book Extracts

Roxboro, NC 27573  
taylor@openbookextracts.com  
(727) 512-8686  
Lic. #

Sample: 2001DBL0403.1410

METRC Sample:  
Lot #: 200125-T10L-1

Strain: Lemon Drop  
Ordered: 01/27/2020; Sampled: 01/29/2020; Completed: 02/03/2020

## Lemon Drop Tincture 1000mg

Ingestible, Tincture, Alcohol



Pesticides		Not Tested		
Analyzed by 300.9 LC/MS/MS and GC/MS/MS				
Compound	LOQ	Limit	Mass	Status

Microbials		Pass			
Analyzed by 300.1 Plating/QPCR					
Quantitative Analysis		LOQ	Limit	Mass	Status
		CFU/g	CFU/g	CFU/g	
Aerobic Bacteria		900	100000	<LOQ	Pass
Bile-Tolerant Gram-Negative Bacteria		90	1000	<LOQ	Pass
Qualitative Analysis		Detected or Not Detected		Status	
E. Coli		Not Detected		Pass	
Salmonella		Not Detected		Pass	

Mycotoxins		Not Tested		
Analyzed by 300.2 Elisa				
Mycotoxin	LOQ	Limit	Mass	Status

Heavy Metals		Not Tested		
Analyzed by 300.8 ICP/MS				
Element	LOQ	Limit	Mass	Status

Residual Solvents		Not Tested		
Analyzed by 300.13 GC/FID and GC/MS				
Compound	LOQ	Limit	Mass	Status



*Stacy Gardalen*

Stacy Gardalen  
Quality Control

*Glen Marquez*

Glen Marquez  
Quality Control



4439 Polaris Ave  
Las Vegas, NV  
(702) 728-5180  
www.dblabslv.com

This report is considered highly confidential and the sole property of the customer. DB Labs will not discuss any part of this study with personnel other than those authorized by the client. The results described in this report only apply to the samples analyzed. The reported result is based on a sample weight with the applicable moisture content for that sample. LOQ = Limit of Quantitation. Pesticide LOQ = Instrument Limit of Quantitation, NA = Not Analyzed, ND = Not Detected, NR = Not Reported, NT = Not Tested. PGR = Plant Growth Regulator. Unless otherwise stated all quality control samples performed within specifications established by the Laboratory. This product has been tested by DB Labs, LLC (MME# 61887736101164525768) using valid testing methodologies and a quality system as required by Nevada state law. Edibles are picked up prior to final packaging unless otherwise stated. Values reported relate only to the product tested. The uncertainty of measurement associated with the measurement result reported in this certificate is available from the organization upon request. DB Labs makes no claims as to the efficacy, safety or other risks associated with any detected or non-detected levels of any compounds reported herein. This Certificate shall not be reproduced except in full, without the written approval of DB Labs.